

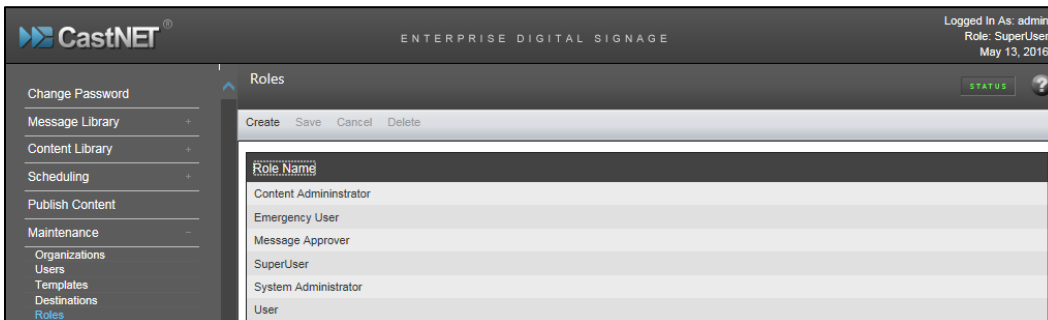
Roles and Switch Users

A User must have authorization to access the CastNET Switch, Inputs/Outputs and Environment profiles. With that in mind, we first need to create Roles that will support the various tasks required to maintain and execute switch features. There are feature sets that support Basic and Admin level switching permissions.

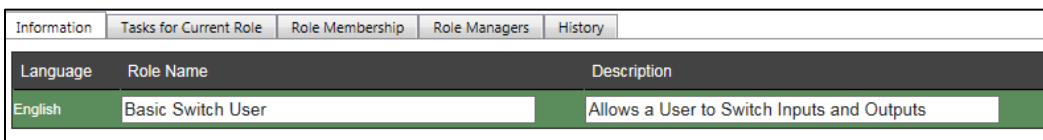
Creating a Basic Switch User Role

First thing to do is to create a role that supports the ability to access the Switching interface and Switch Inputs and Output.

1. Log into CastNET.
2. Select Maintenance>Roles
3. Select Create on the work bar.



4. Select the Information tab and enter the name of the desired role.

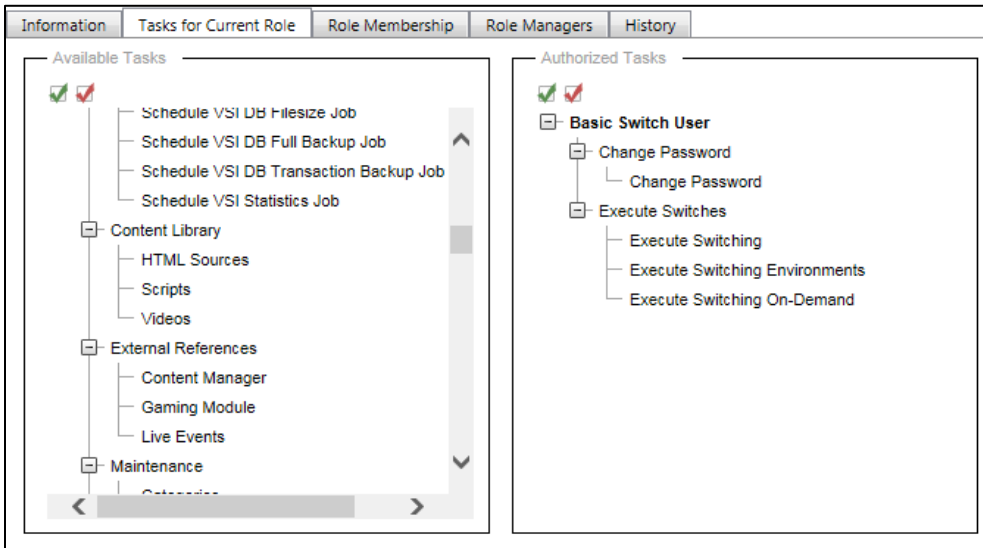


5. Select the Tasks for Current Role tab.
6. In the Available Tasks Section, scroll down until you see the Execute Switches task header.

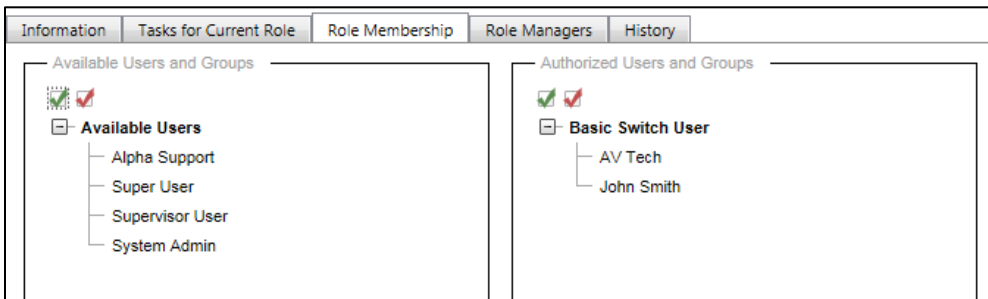
BASIC SWITCH ROLE TASKS

There are three tasks that you can add to a role. Select which tasks best suit the tasks that are required for User profiles associated with this role.

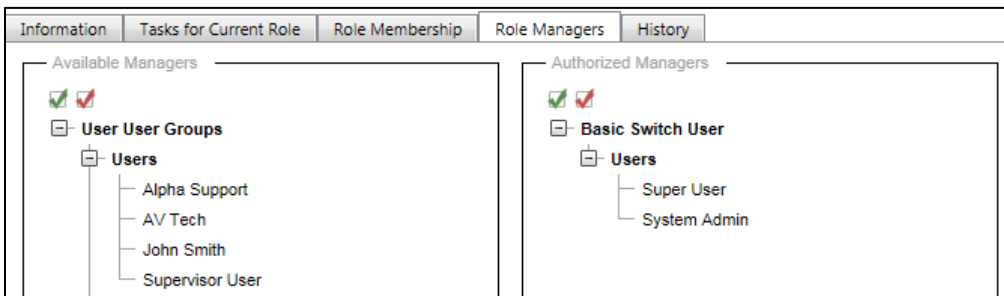
- **Execute Switching** – This feature is required to access the section in CastNET where a user would execute switching commands.
- **Execute Switching – Environments** – This task allows a User to execute Environments. A User still needs authorization to each individual Environment. If you need assistance granting authorization to an Environment, please reference the Environments section of the document.
- **Execute Switching On-Demand** – A User may select individual Input Source and Output Devices for Switching. A User would still need authorization to each Input Source and Output Device.



7. Select the Role Memberships Tab.
8. Grant access to Users that will need authorization to execute Switch commands.



9. Select Role Manager Tab. If a User is granted authorization to manage a role with proper task assignments, they may edit the role and grant authorizations to other Users.



10. Click Save on the work bar.

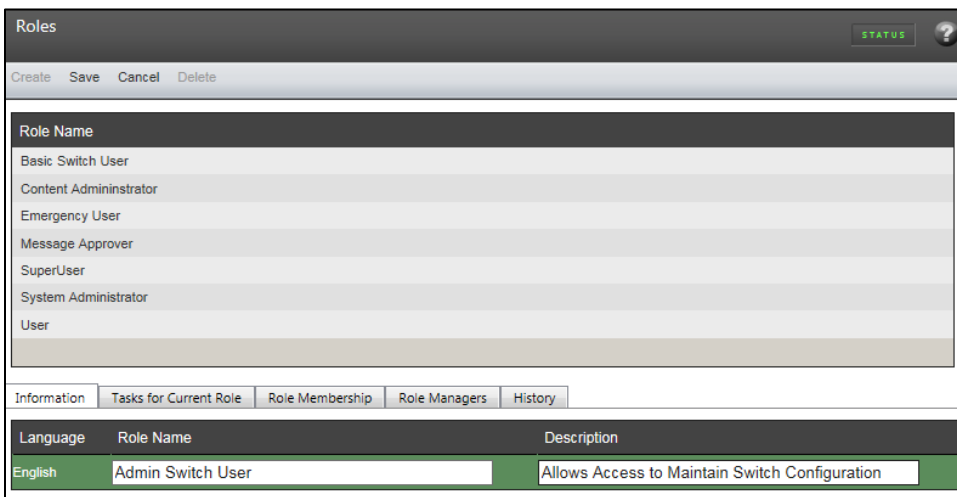
Creating an Administrator Switch Role

By default, any User that has been granted the Super User role will have access to and see all Switch configurations. However, you will still need to give authorization to Inputs, Outputs and Environments. Since the Super User role is the highest level and not everyone should have full access to all modules including Messaging, it is a good practice to create an Administrator Switching Role that is specific to Switching. You can combine the basic Switch Role features along with the Admin Switching task to create a very powerful User Role.

In this example, we will create an Administrator Switch role. This role will support the required tasks in CastNET to add and edit all Switch configurations.

To create an Administrator Switch role, follow these steps:

1. Log into CastNET.
2. Select Maintenance>Roles
3. Select Create on the work bar.



4. On the Information tab, Enter Name and Description of Admin Role.
5. Select Tasks for Current Role. In the available tasks section, select and drag the Header “Change Password”, Execute Switches, and Switching”. Drag and Drop Maintenance Switching Configuration.

ADMIN SWITCHING TASKS

- **Lockout is allowed** – This feature allows an Administrator to lock out the Output Displays selected in a Manual Switch or Environments for up to 360 minutes, blocking any other users from switching the selected Outputs Displays to other Input Sources until the desired lockout time expires.

Note: Only Users that have Lockout options may override a Switch Lockout.

- **View Switching Configuration** - This will allow a User access to View Maintenance>Switching Configuration, a requirement for any Admin Switch Role.
- **Switching Configuration** - This will grant a User access to Maintenance>Switching Configuration, a requirement for any Admin Switch Role.

Roles

Create Save Cancel Delete

Role Name

- Admin Switch User
- Basic Switch User
- Content Administrator
- Emergency User
- Message Approver
- SuperUser
- System Administrator
- User

Information Tasks for Current Role Role Membership Role Managers History

Available Tasks

- My Available Tasks
 - Admin Functions
 - Lock Management
 - Automation
 - Candidates for Deletion
 - Job Scheduler
 - Root Object Retention
 - Schedule CastNET Cleanup Candidates Jc
 - Schedule CastNET Data Cleanup Job
 - Schedule CastNET DB Filesize Job
 - Schedule CastNET Expired Message Upde
 - Schedule CastNET Full Backup Job
 - Schedule CastNET Publish Log Delete Job

Authorized Tasks

- Admin Switch User
 - Change Password
 - Change Password
 - Execute Switches
 - Execute Switching
 - Execute Switching Environments
 - Execute Switching On-Demand
 - Maintenance
 - Switching Configuration
 - Switching
 - Lockout is Allowed
 - View Switching Configuration

6. Select the Role Membership tab to grant this role to User Profiles. Users who are given access will inherit all tasks selected for that Role.
7. Select the Role Managers tab to grant other Users access to configure this role. Users would also be able to grant other Users membership to this role.
8. Select Save on the work bar.

Note: All Users including Super Users, must be given access to Switch Profiles, Input Sources and Display Output Devices. This ensures each User has the proper authorizations in a Switch module.

Authorizing Users to Input Sources, Output sources and Switches

Once a User has been assigned a Role that allows switching rights, a User still needs authorization rights to each Input Source, Output Display Device and the Switch Profile. Users are only allowed to execute input and output switches for which they are authorized. User groups may also be authorized all Inputs and Outputs.

To authorize access to Input Sources, follow these steps:

1. Log into CastNET.
2. Select Maintenance>Switching Configuration.
3. Click "Switches" on the work bar.
4. Double click desired switch profile.

Note: If your system has more than one switch profile, authorization would need to be assigned to all Switch profiles.

5. Select the Input Tab.
6. Select the Access tab, next to the Setup tab.
7. On the Access Tab, select By Users/Group to assign Inputs by Independent User or Select "By Input" to grant access to users by Input.

Switch Name	Switch Type	Switch ID
IPTV Switch	Enseo	1

Information | Communications | **Inputs** | Outputs | Access | History

Setup | Access

By Users/Groups By Input

Users | User Groups

Users

- alpha video
- avtech
- jsmith
- mfrank
- admin
- supervisor
- system

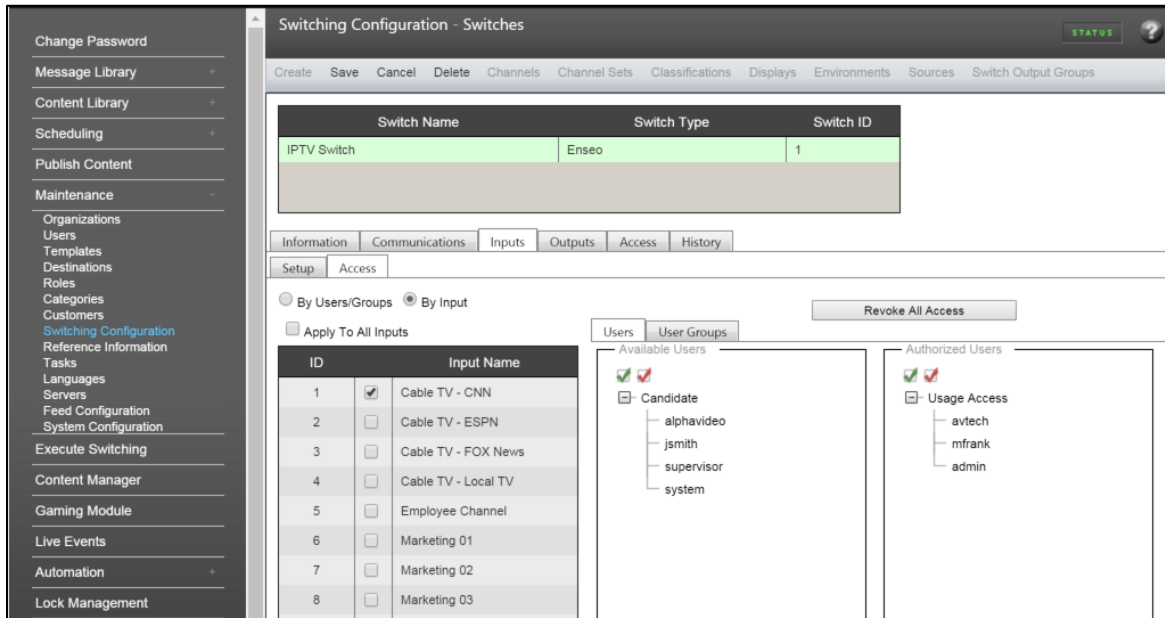
Candidate Inputs

- Cable TV - ESPN
- Cable TV - FOX News
- Cable TV - Local TV
- Employee Channel
- Marketing 01
- Marketing 02
- Marketing 03

Input Access Granted

- Usage Access
 - Cable TV - CNN

By User/Groups View



By Input View

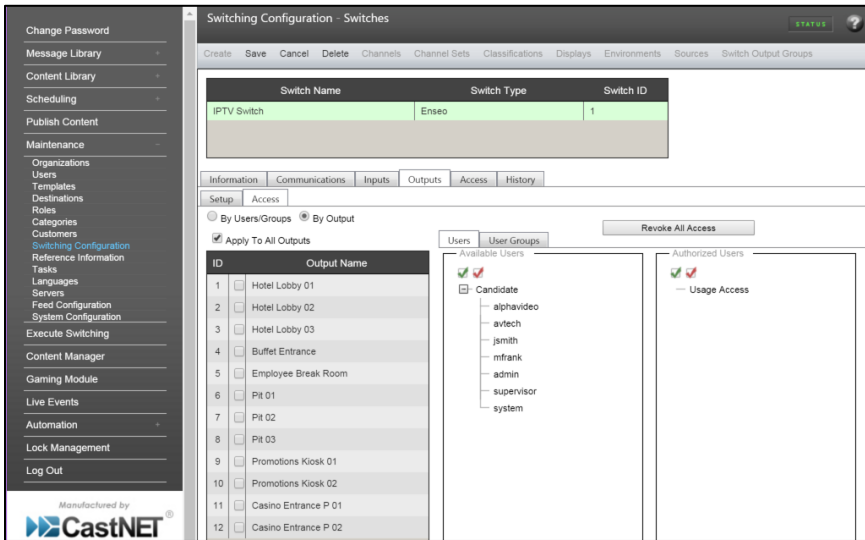
8. Select “Apply to All Inputs” to grant a User access to all available inputs or manually select each input to grant access, then Drag and Drop Users or User Groups that you desire to grant access.
9. Select Save on the work bar.

To authorize access to Output Sources, follow these steps:

1. Log into CastNET.
2. Select Maintenance>Switching Configuration.
3. Click switches on the work bar.
4. Double click desired switch profile.

Note: If your system has more than one switch profiles, right would need to be assigned to all Switch profiles.

5. Select the Outputs Tab.
6. Select the Access tab.
7. On the Access Tab, select By Users/Group to assign Outputs by Independent Users or Select “By Output” to grant access to users by Output.
8. Select “Apply to All Outputs” to grant a User access to all available outputs or manually select each Output to grant access, then Drag and Drop Users or User Groups that you wish to grant access.
9. Select Save on the work bar.



Authorizing Switch Access

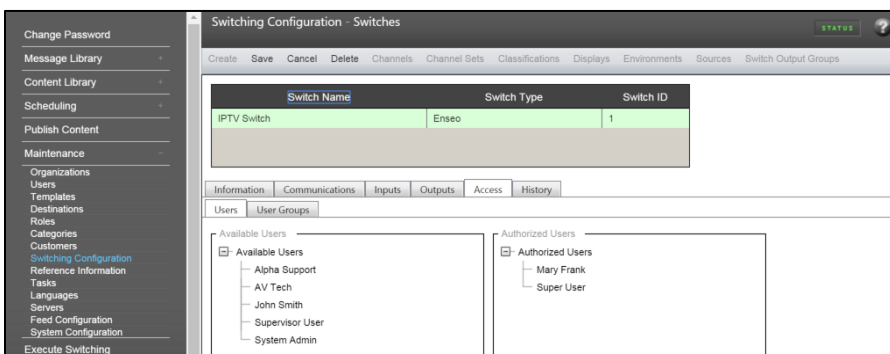
Once a User has been assigned a role that allows switching rights and their User profile has been granted access to Inputs and Outputs, they still require access to the Switch Profile. User Group may also be assigned access to a Switch profile.

To authorize access to a Switch profile, follow these steps:

1. Log into CastNET.
2. Select Maintenance>Switching Configuration.
3. Click “Switches” on the work bar.
4. Double click desired switch profile.

Note: If your system has more than one switch profile, authorization would need to be assigned to all Switch profiles.

5. Select the Access tab.
6. Select the User or Users Groups tab.
7. Drag and drop Users or User group from the “Available Users” section to the “Authorized Users” section.
8. Select Save on the work bar.



Authorizing access to Environments

Each User that requires access to configure or execute a Switch Environment must have a role that supports Environments and must be granted authorization to each Environment profile.

To authorize access to Environments, follow these steps:

1. Log into CastNET.
2. Select Maintenance>Switching Configuration.
3. Click Environments on the work bar.
4. Double click desired Environment profile.
5. Select the Access tab.
6. Select User or User Group that is desired and Drag and drop to “User Access Users” if you only want a User to Switch Environments. Drag and drop Users to “Full Access Users” section if they would need to Switch and configure the Environments.
7. Select Save on the work bar.

The screenshot displays the 'Switching Configuration - Environments' page in the CastNET application. At the top right, it shows the user is logged in as 'admin' with the role 'SuperUser' on 'June 14, 2016'. The main area features a table with columns 'Environment Name' and 'Scheduled'. Below the table, there are tabs for 'Information', 'Sources', 'Displays', 'Schedules', 'Access', and 'History'. The 'Access' tab is active, showing 'Users' and 'User Groups' sections. The 'Users' section includes 'Use Access Users' (with 'Use Users' containing 'Mary Frank' and 'Super User') and 'Full Access Users' (with 'Full Access Users'). A tree view on the left shows the hierarchy of switch configurations under 'Default', including 'IPTV Switch', 'Cable TV - CNN', 'Cable TV - ESPN', 'Employee Channel', and 'Marketing 01'.